

1. Bright Turquoise Blues

New: Aquamarine



2. Grey Turquoise Blues

New: Waterfall, Calypso



3. Grey-Green Blues

New: Blue Moon, Marbles, Paua Shell - Jan 2020

Tweaked: Lake Wanaka (barely)



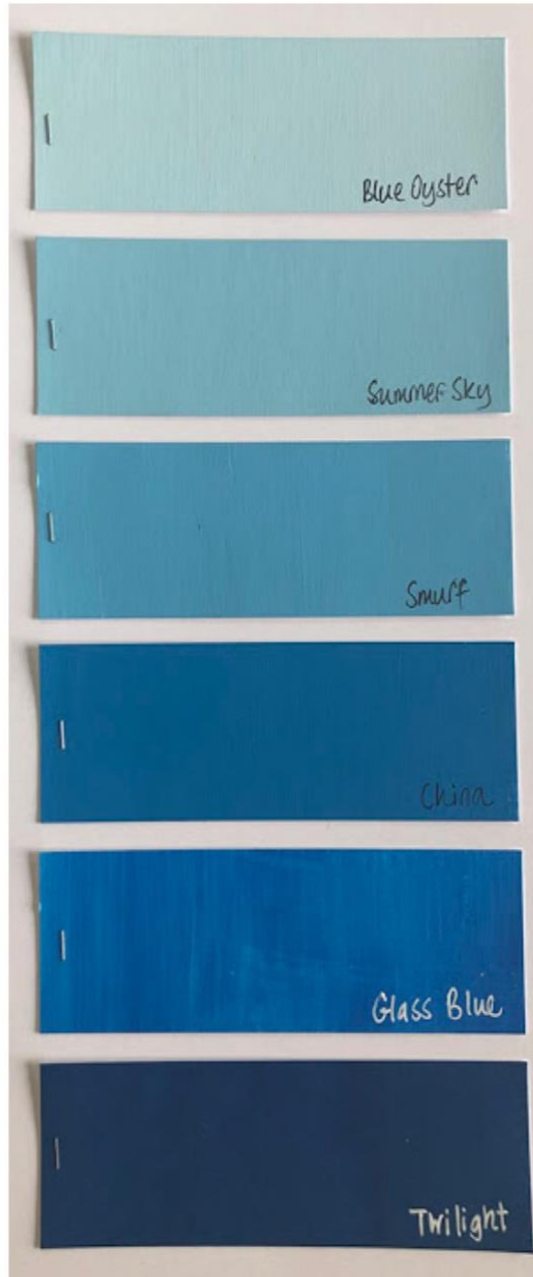
4. Grey Blues

New: Ice Berg, Wolf Eye, Blue Smoke, Blue Jeans
Tweaked: Surf's Up



5. Bright Clean Blues

New: Summer Sky
Tweaked: Blue Oyster, Smurf, China (Barely), Twilight (noticeably)



6. Purple Blues

NEW: Cloudy, Crispy Blue, Pool, Azure, Blew - Oct 2020
Revised - Blueberry



7. Blue Purples

New: Periwinkle, Forget-me-Not

Tweaked: Wisteria, Purple Rain (not much)



8. Purples

New: Mauve, Globe Thistle, Grape - Jan 2020

Tweaked: Moonlight (barely)



9. Pink Purples

New: Taro Milk Tea, Byzantium

Tweaked: Sugar Plum, Sour Grapes



10. Bright Pinks

New: Professor Plum (returned colour)

Tweaked: Orchid



11. Soft Pinks

New: Sorbet

Tweaked: Blush, Cherry Blossom, Rose (barely)



12. Coral Pinks

New: Peachy Keen, Scottish Salmon, Blood Orange (returned colour)



13. Bright Warms

New: Cayenne, Red Lipstick



14. Rustic Warms



15. Browns

New: Cloud 9, Sand



16. Neutrals

New: Truffle



17. Greys

New: Elephant (returned colour)

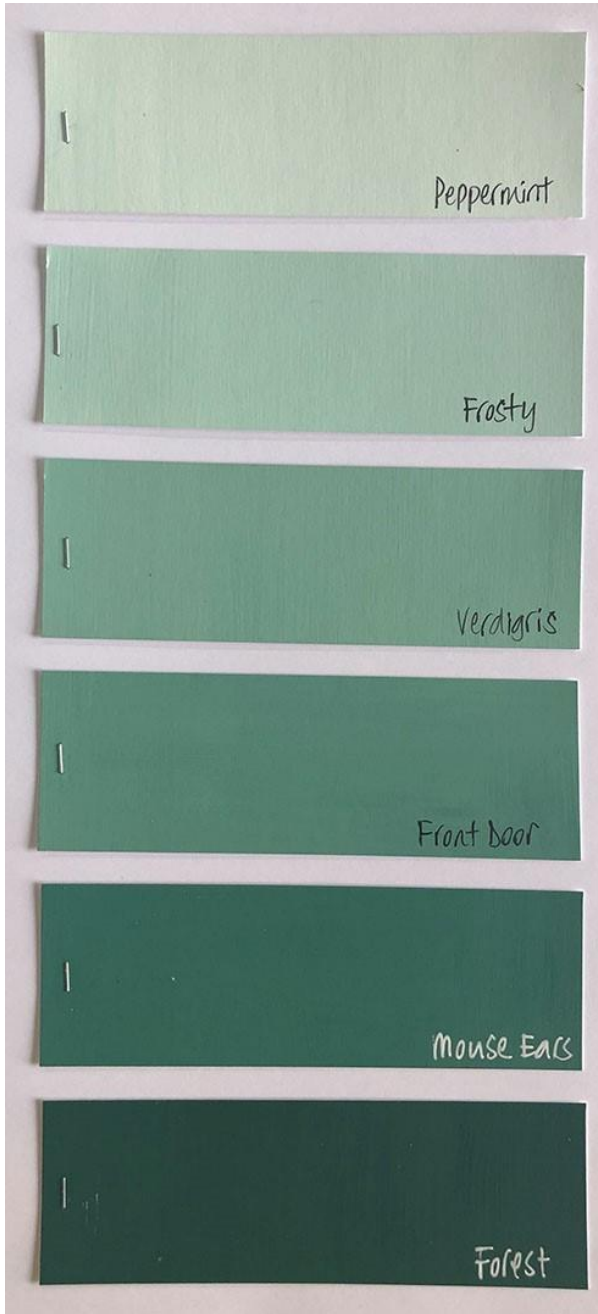


18. Khaki Greens

New: Lichen, Khaki - Jan 2020



19. Mint Greens
(January 2021)



20. Clean Greens
(March 2020)



21. Fresh Greens

New: Lawn

Tweaked: Teresa Green, Hyde Park (barely), Guacamole, Granny Smith (a bit)



22. Yellow Greens

Tweaked: Chartreuse, Hey Pesto (noticeably), Tinned Peas (barely)



Seth Apter's colors





And of course the existing 20 shades in Tracy's line...



